

ALCO APOT Report

September 2024



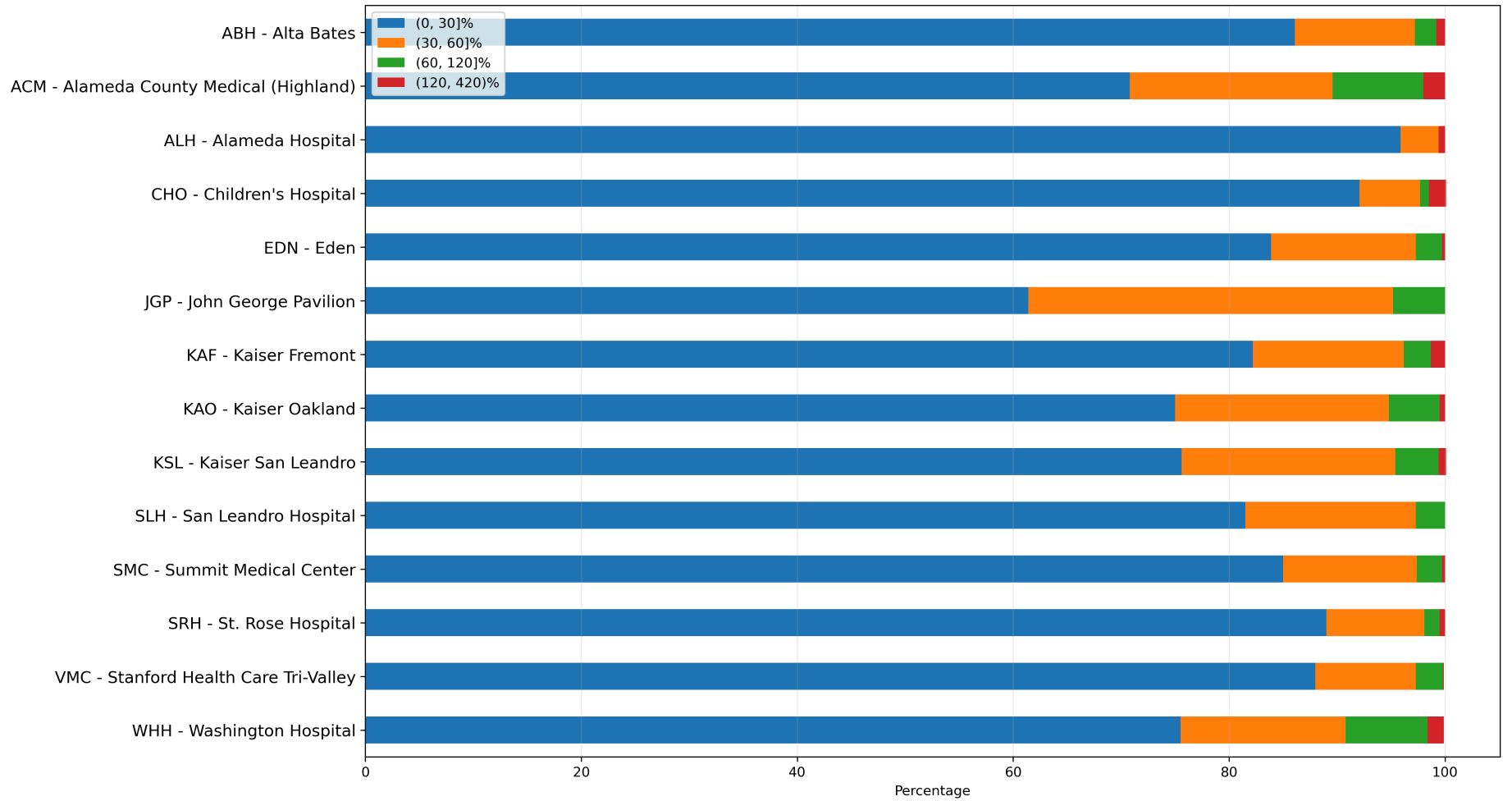
1 - Destinations APOT Statistics

	Transports	Average	90th Percentile	APOTs > 30 min	APOTs > 30 min %
ABH - Alta Bates	505	21.2	34.8	70	13.9%
ACM - Alameda County Medical (Highland)	997	28.3	61.3	291	29.2%
ALH - Alameda Hospital	316	13.6	21.9	13	4.1%
CHO - Children's Hospital	126	16.0	25.3	10	7.9%
EDN - Eden	923	19.9	36.6	149	16.1%
JGP - John George Pavilion	228	28.5	48.2	88	38.6%
KAF - Kaiser Fremont	529	21.7	39.7	94	17.8%
KAO - Kaiser Oakland	752	24.3	45.8	188	25.0%
KSL - Kaiser San Leandro	749	25.4	45.4	183	24.4%
SLH - San Leandro Hospital	557	21.8	39.5	103	18.5%
SMC - Summit Medical Center	1,389	19.3	36.1	208	15.0%
SRH - St. Rose Hospital	427	17.9	30.9	47	11.0%
VMC - Stanford Health Care Tri-Valley	685	18.0	32.2	82	12.0%
WHH - Washington Hospital	968	26.3	57.0	237	24.5%

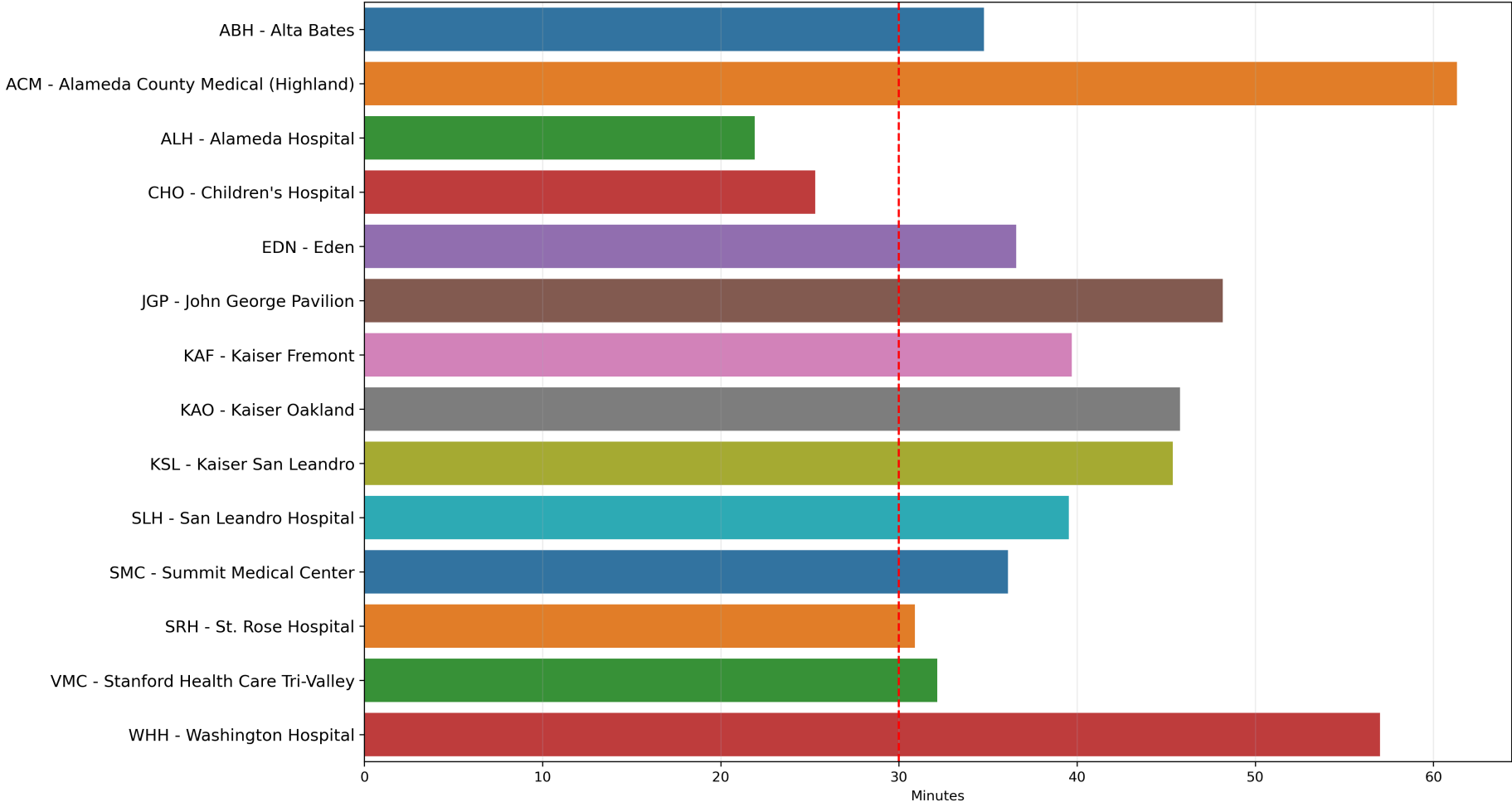
2 - Destinations APOT Bins

	Transports	(0, 30]	(0, 30]%	(30, 60]	(30, 60]%	(60, 120]	(60, 120]%	(120, 420)	(120, 420)%
ABH - Alta Bates	505	435	86.1%	56	11.1%	10	2.0%	4	0.8%
ACM - Alameda County Medical (Highland)	997	706	70.8%	187	18.8%	84	8.4%	20	2.0%
ALH - Alameda Hospital	316	303	95.9%	11	3.5%	0	0.0%	2	0.6%
CHO - Children's Hospital	126	116	92.1%	7	5.6%	1	0.8%	2	1.6%
EDN - Eden	923	774	83.9%	124	13.4%	22	2.4%	3	0.3%
JGP - John George Pavilion	228	140	61.4%	77	33.8%	11	4.8%	0	0.0%
KAF - Kaiser Fremont	529	435	82.2%	74	14.0%	13	2.5%	7	1.3%
KAO - Kaiser Oakland	752	564	75.0%	149	19.8%	35	4.7%	4	0.5%
KSL - Kaiser San Leandro	749	566	75.6%	148	19.8%	30	4.0%	5	0.7%
SLH - San Leandro Hospital	557	454	81.5%	88	15.8%	15	2.7%	0	0.0%
SMC - Summit Medical Center	1,389	1,181	85.0%	172	12.4%	32	2.3%	4	0.3%
SRH - St. Rose Hospital	427	380	89.0%	39	9.1%	6	1.4%	2	0.5%
VMC - Stanford Health Care Tri-Valley	685	603	88.0%	64	9.3%	17	2.5%	1	0.1%
WHH - Washington Hospital	968	731	75.5%	148	15.3%	74	7.6%	15	1.5%

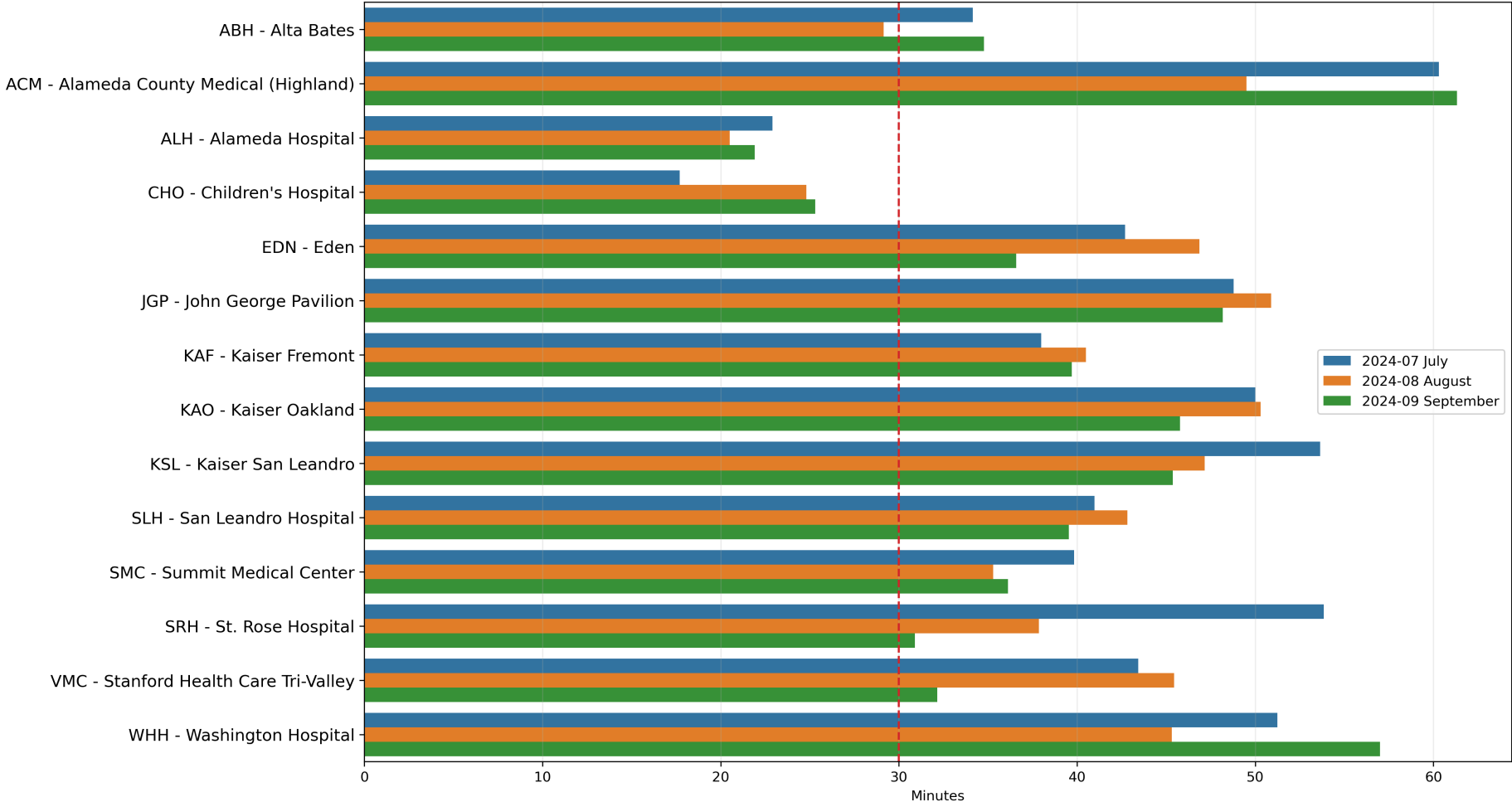
3 - Destinations APOT Stacked Bins



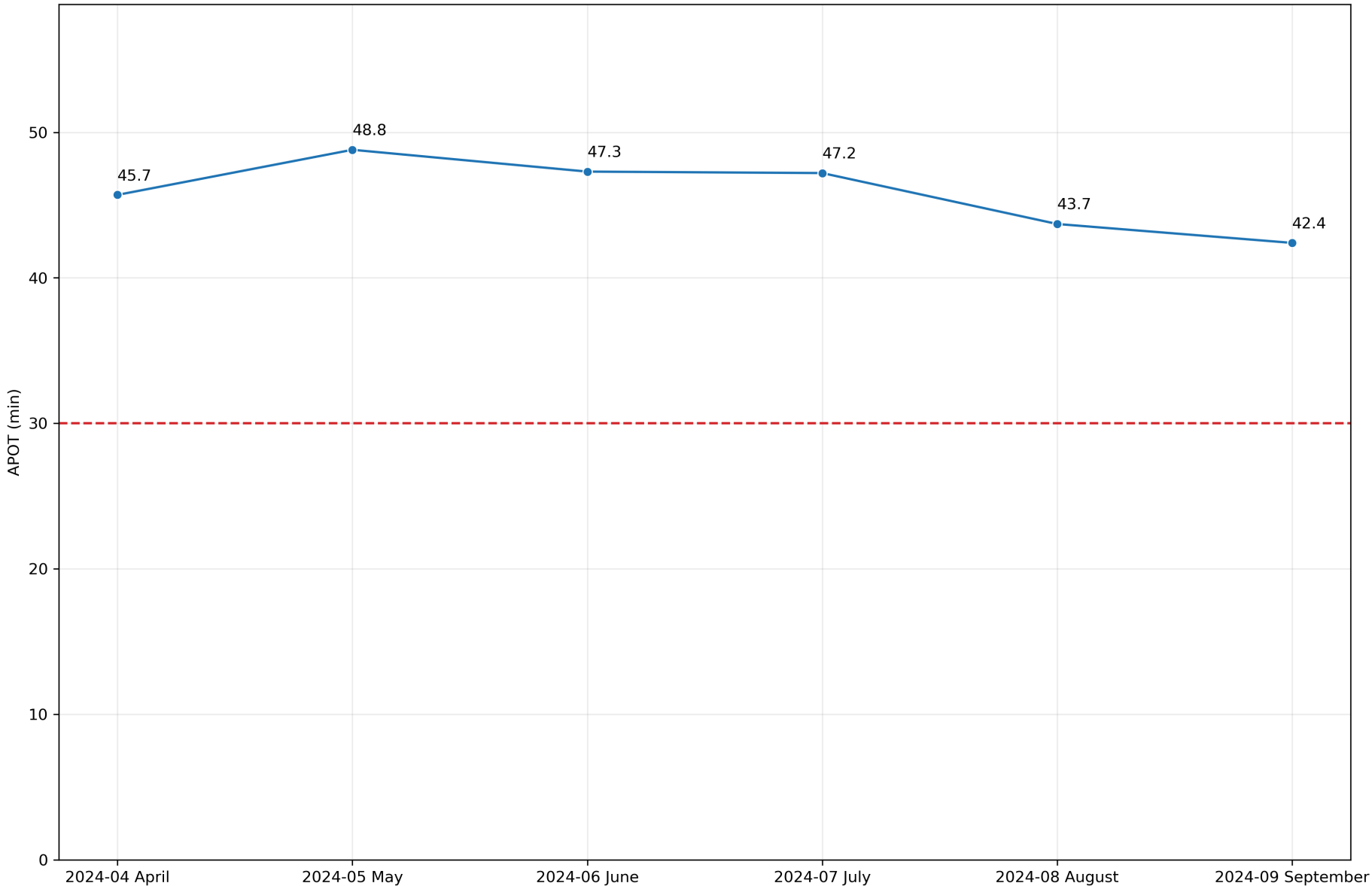
4 - September 2024 APOT by Destination 90th Percentile



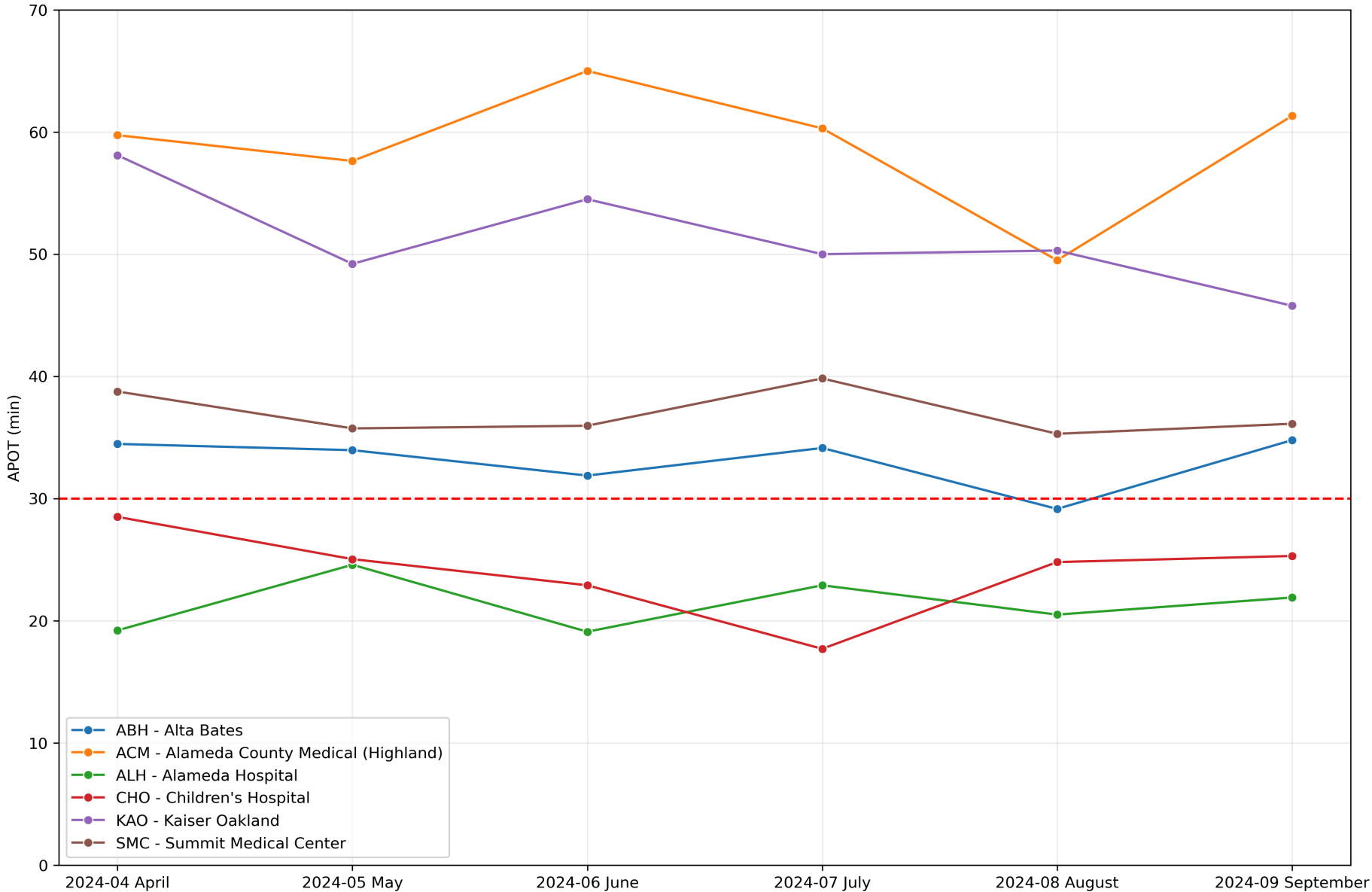
5 - APOTs by Destination 90th Percentile



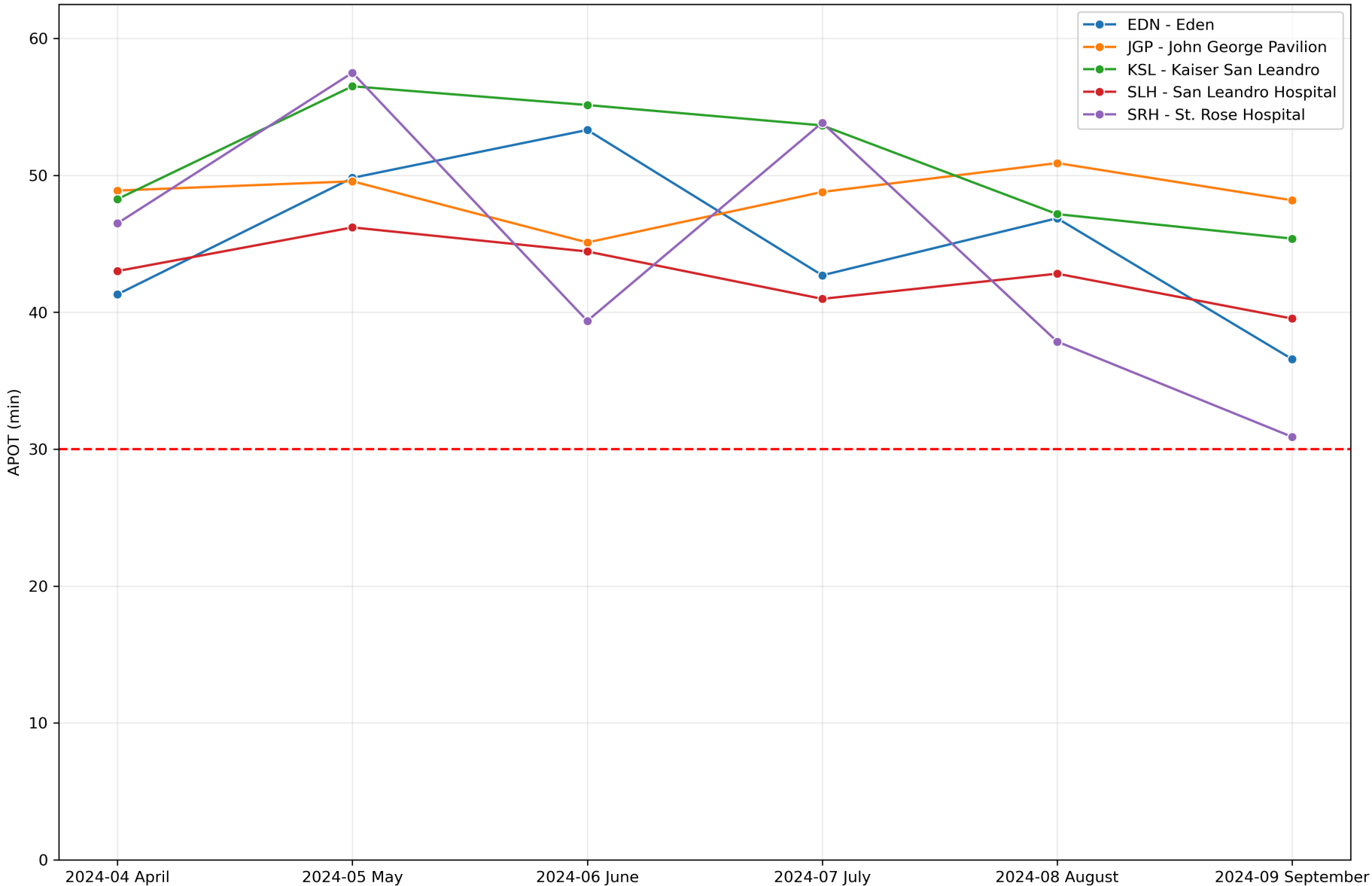
6 - Countywide APOT 90th Percentile



7 - Northern APOTs 90th Percentile



8 - Middle APOTs 90th Percentile



9 - Southern APOTs 90th Percentile

